

MVE CryShipper Series

Featuring Advanced QWick™ Charge Technology

The MVE CryShipper Series is designed for the safe transportation of biological samples at cryogenic (-150°C or colder) temperatures. MVE CryShipper Series utilizes the Advanced QWick Charge Technology that will charge the vapor shipper in two hours, providing the benefit of same-day vapor shipping. Manufactured from durable, lightweight aluminum, the vapor shippers employ a hydrophobic compound which absorbs the liquid nitrogen to ensure dry, spill-free vapor-phase shipping. Protective shipping containers are available for most models.

A protective shipping carton is available for most models. These containers may be used to ship your samples with a “non-hazardous” classification throughout the world, thus reducing costs and helping to assure sample viability.

Features Include:

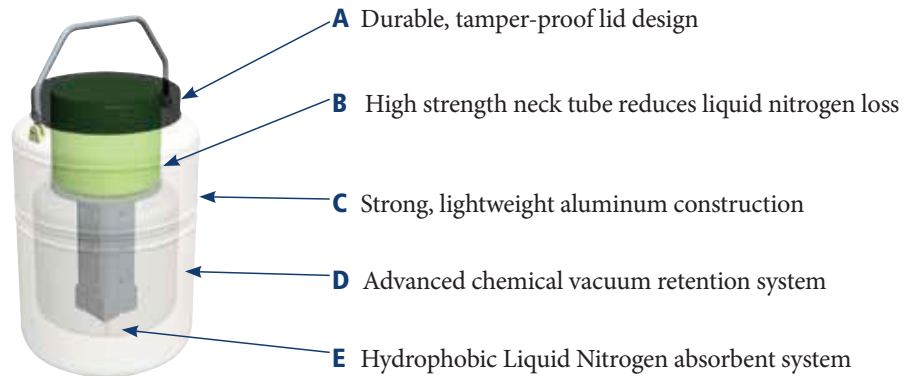
- Protective shipping containers ensure upright shipping
- Low liquid nitrogen consumption
- Convenient lightweight package
- **CHARGES IN TWO HOURS**



ADVANCED
QWick Charge Technology
Charges in under 2 hours

Ref 2088994 Rev A

Tank Features



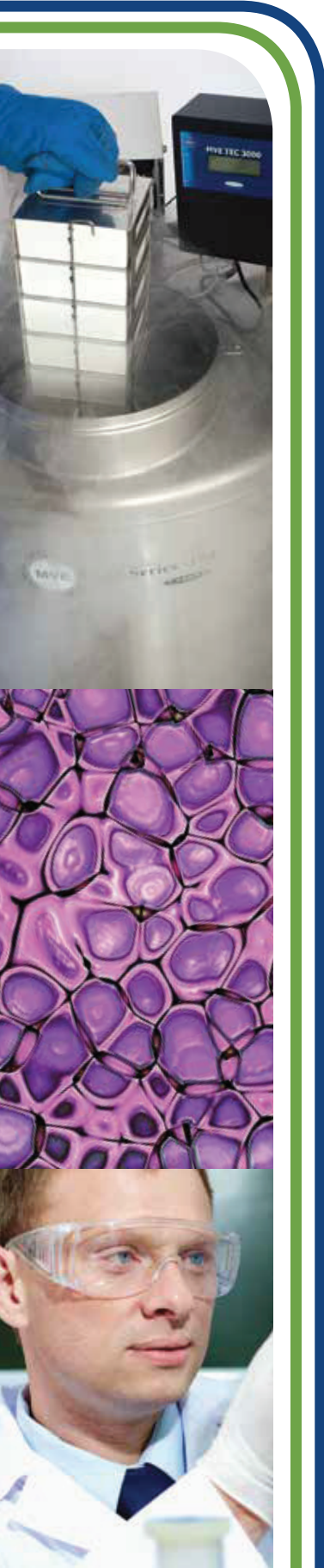
	SC 2/1V	SC 4/2V	SC 4/3V	SC 20/12V	XC 20/3V**	Mini Moover	Cryo-Moover	Cryo Shipper Mini	Cryo Shipper	CryoShipper XC	IATA
Maximum Storage Capacity											
No. of Canisters	1	1	1	6	4 + 1 Center	1	7	-	1 Rack	-	Stainless Steel Secondary Container
No. of 1/2 cc Straws 10/cane	-	280	120	540	2500/2000**	60	3080	-		-	
No. of 1/2 cc Straws 1 Level Bulk	88	440	210	780	3750/3000**	88	4354	-		-	
No. of 1/4 cc Straws 1 Level Bulk	182	938	452	1630	7410/6000	185	-	-		-	
No. of 1.2 & 2.0 ml Vials 5/cane	-	95	40	150	675/560**	20	945	-		-	
No. of 1.2 & 2.0 ml Vials 6/cane	-	102	48	180	840/672**	24	1134	-		500	
No. of blood bags stored 4R9953	-	-	-	-	-	-	-	-	10	10	
Performance											
Liquid Nitrogen Capacity L est.	1.5	3.6	4.3	12.3	6.8	2.9	4.2	5.9	8.5	10.0	11.8
Static Holding Time Days	8	13	21	85	16	14	12	7	10	14	14
Static Evaporation Rate* L/day	0.19	0.26	0.20	0.09	0.35	0.20	0.35	0.84	0.85	0.85	0.80
Unit Dimensions											
Neck Opening in (mm)	1.40 (35.0)	2.75 (70.0)	2.00 (51.0)	2.00 (51.0)	3.81 (96.7)	1.40 (35.0)	3.80 (97.0)	8.50 (216.0)	8.50 (216.0)	8.50 (216.0)	8.50 (216.0)
Overall Height in (mm)	13.5 (343)	18.4 (468)	19.4 (492)	25.7 (652)	25.0 (635)	19.5 (495)	22.0 (558)	20.0 (508)	21.5 (546)	23.0 (584)	24.0 (610)
Outside Diameter in (mm)	7.25 (184)	8.70 (222)	8.70 (222)	14.50 (368)	14.50 (368)	7.20 (184)	18.30 (464)	11.60 (295)	14.50 (369)	15.00 (381)	15.00 (381)
Canister Height in (mm)	5.0 (127)	11.0 (278)	11.0 (278)	11.0 (278)	11.0 (278)	11.0 (278)	11.0 (278)	-	-	12.5 (317.5±)	8.5 (215)
Canister Diameter in (mm)	1.20 (31)	2.62 (67)	1.81 (46)	1.50 (38)	3.20 (80)	1.20 (31)	3.10 (79)	-	-	-	7.50 (190)
Weight Empty lb. (kg)	6.0 (2.7)	10.0 (4.5)	11.6 (5.3)	25.7 (11.6)	24.1 (10.9)	9.0 (4.1)	30.5 (13.8)	23 (10.4)	26.1 (11.8)	33.0 (15.0)	33.0 (15.0)
Weight Charged vapor lb. (kg)	8.0 (3.6)	17.1 (7.7)	19.1 (8.7)	41.3 (18.7)	34.0 (15.4)	13.7 (6.2)	40.9 (18.6)	32 (14.5)	39.0 (17.7)	49.0 (22.2)	50.5 (22.9)
Weight Full liquid lb. (kg)	9.0 (4.1)	20.0 (9.1)	21.0 (9.5)	56.5 (25.6)	38.4 (17.4)	15.5 (7.0)	87 (39.5)	45 (20.4)	54.5 (24.7)	73.0 (33.1)	73.0 (33.1)

* Without inventory

** Optional center absorbent added to center canister (3 week holding time).

TWO Year Parts Warranty • THREE Year Vacuum Warranty

Conforms to MDD 93/42/EEC, the Medical Device Directive for the EU.



MVE Doble Series

Featuring Advanced QWick™ Charge Technology

The Doble Series cryogenic liquid dewars are the first units to be designed for both vapor shipment and liquid storage. The Doble QWick Series utilizes an absorbent wicking material that charges with liquid nitrogen in two hours, providing the capacity for same-day vapor shipping. A unique absorbent layer in the base of the storage tanks of both series enables them to be charged with nitrogen and employed as dry shippers with hold times of up to 30 days. Once at the final destination, the tanks can be filled with liquid and used for long term storage, therefore avoiding the need for return shipments.

Features Include:

- Liquid and vapor storage options
- Low liquid nitrogen consumption
- Convenient lightweight package
- **CHARGES IN TWO HOURS**

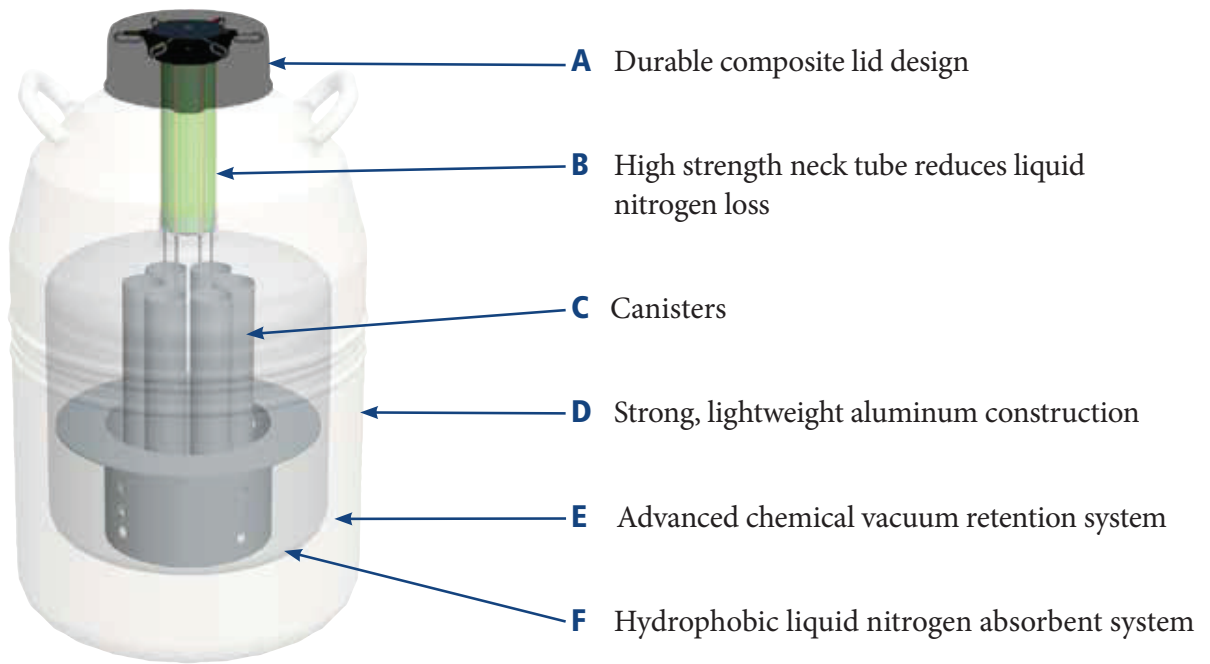


ADVANCED
QWick Charge Technology

Charges in under 2 hours

Ref 2088894 Rev A

Tank Features



	Doble 11	Doble 20	Doble 22	Doble 28	Doble 34	Doble 47	Doble 47-10
Maximum Storage Capacity							
Number of Canisters	6	6	6	6	6	6	10
No. of 1/2 cc Straws 10/cane	660	660	2400	2,400	2,100	4,500	3,500
Vial Capacity	210	210	810	810	630	1,320	1,050
Performance							
LN2 Capacity w/o Inventory w/o Inventory L est.	10.0	18.5	20.0	28.0	32.0	46.0	46.0
Vapor Capacity L	3.1	2.8	6.7	8.4	6.7	8.4	9.6
Static Evaporation Rate L/day	0.17	0.10	0.35	0.35	0.20	0.40	0.40
Working Duration days for liquid	37	116	40	50	100	74	72
Working Duration days for vapor	17	21	18	24	20	21	21
Unit Dimensions							
Neck Opening in (mm)	2.18 (55)	2.18 (55)	3.81 (97)	3.81 (97)	3.50 (89)	5.00 (127)	5.00 (127)
Overall Height in (mm)	21.6 (549)	25.7 (652)	22.0 (559)	22 (559)	26.6 (676)	26.5 (673)	26.5 (673)
Outside Diameter in (mm)	10.2 (260)	14.5 (368)	14.5 (368)	18.2 (462)	18.2 (462)	20.0 (508)	20.0 (508)
Canister Height in (mm)	11 (279)	11 (279)	11 (278)	11 (279)	11 (279)	11 (279)	11 (279)
Canister Diameter in (mm)	1.65 (41)	1.65 (42)	3.09 (79)	3.09 (78)	2.81 (72)	4.00 (101)	2.81 (72)
Weight Empty lb. (kg)	14.5 (6.6)	22.7 (10.3)	30.0 (13.6)	33.0 (15.0)	34.0 (15.4)	40.0 (18.1)	40.0 (18.1)
Weight Charged vapor lb. (kg)	18.5 (8.4)	29.7 (13.5)	40.0 (18.2)	47.0 (21.3)	48.5 (22.0)	53.5 (24.3)	53.5 (24.3)
Weight Full liquid lb. (kg)	32 (14.5)	56 (25.4)	68 (30.8)	89 (40.4)	92 (41.7)	117 (53.1)	117 (53.1)

TWO Year Parts Warranty • THREE Year Vacuum Warranty

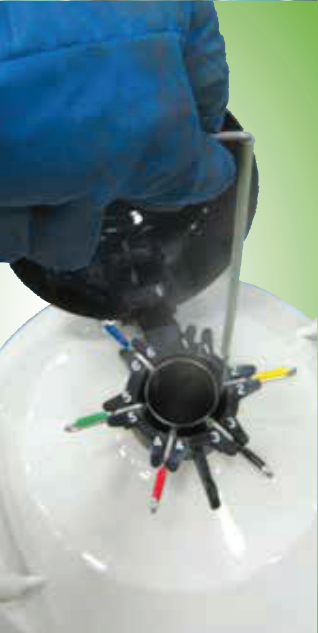
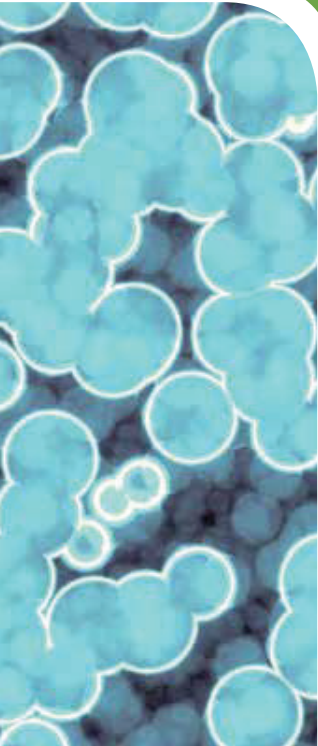
Conforms to MDD 93/42/EEC, the Medical Device Directive for the EU.

PDF Logger®

With the PDF Logger®, you require only one single device and no specific software or cables to monitor temperature during the global transfer of cryobiological goods. After the datalogger has been in service for one year, simply discard the logger and purchase a new one for about the same cost of recalibration and battery replacement. Your PDF Logger is always under warranty!

Features Include:

- Records and stores up to 16,000 data points
- High and Low Alarm Settings
- No recalibrations
- 1 year lifespan
- No additional software or cables needed!
- ISO 19005-1
- Compliant: FDA 21 CFR Part 11, GMP, GLP
- CE marked



PDF Logger®

Specifications	
Dimensions L, W, H in (mm)	3.7 x 1.6 x 0.5 (95 x 40 x 12)
Weight oz (g)	1.4 (40)
Temperature Range	-200°C to +200°C
Accuracy	± 0.5°C [-200°C, -10.1°C]
Resolution	0.1°C
Display	Multifunction LCD, 23.5 x 23.5 mm
Case	ABS plastic
Battery	3.6V
Battery Life	400 days
Sensor	Pt100 3-wire class 0.5
Memory	16,000 data points
Interface	USB – PC Universal Serial Bus
Evaluation Report	Built-in PDF file generator that automatically establishes an evaluation file including graph. Complies to the ISO Standard 19005-1 Document Management for the long-term preservation of electronic documents

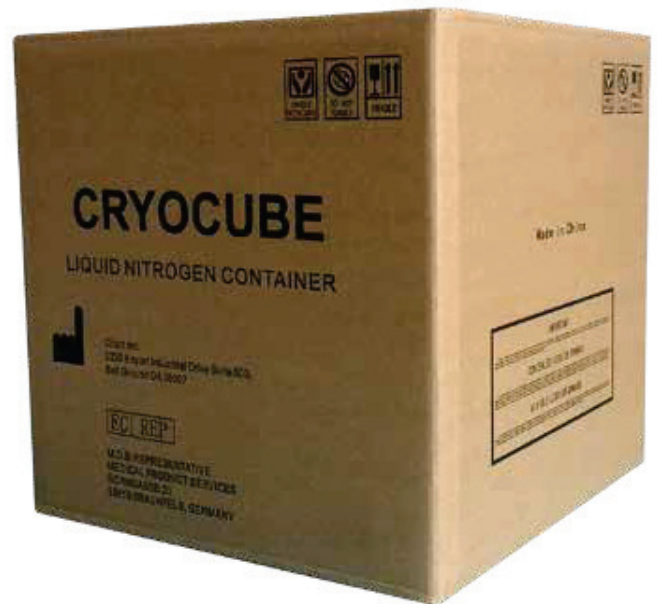
1 Year Warranty — No Returns

MVE CryoCube™

The MVE CryoCube is a secure cryogenic shipping option for your biological samples. In keeping with MVE tradition, the CryoCube incorporates creative engineering and simplistic design to allow shipping in any orientation without sacrificing temperature or hold time. Improved welded construction provides the CryoCube with consistent, high quality design with every unit. **One way shipping saves on dry ice storage and shipping.**

Features include:

- Charges in 1 hour
- Operates as a dry shipper
- -150° C temperature
- 5-day holding time
- Safe shipping in any orientation
- Safe for international shipping
- Welded construction for added integrity



Above:
CryoCube insert

MVE CryoCube™	
Maximum Storage Capacity	
Number of Canisters	1
Number of 1/2 cc Straws in Bulk	88
Number of 1/4 cc Straws in Bulk	182
Number of 1.2 & 2.0 ml vials	6
Performance	
LN2 Capacity w/o Inventory (min) L est.	1.5
Static Holding Time days	5
Unit Dimensions	
Neck Opening in. (mm)	1.4 (35)
Overall Height in. (mm)	12.5 (317.5)
Overall Width in. (mm)	12 (305)
Overall Depth in. (mm)	12 (305)
Inner Canister Height in. (mm)	4.72 (120)
Inner Canister Diameter in. (mm)	1.25 (32)
Weight Empty lb. (kg)	7.5 (3.41)
Weight Charged lb. (kg)	10.2 (4.63)

ONE Year Vacuum Warranty

MVE 1536 Dry Shipper

The MVE 1536PD Dry Shipper is specifically designed to provide peace of mind when shipping and/or relocating samples.

Features Include:

- Liquid Nitrogen absorbent can be charged for dry shipment
- Hold time up to 20 days when properly charged
- Rigid steel frame can be moved with pallet jack/forklift
- Sized to fit in a wide-body aircraft
- Inventory tray locks to prevent rotation during transit
- Locking lid
- Includes data logger to monitor and record sample temperature during shipment or relocation
- Inner vessel may be decontaminated after shipping if necessary

